



*Powering Business Worldwide*

# Illustrated Parts List

---

**ZY07161-ZY07163-ZY07164**

**November 2017**

# Contents

How To Use The Illustrated Parts List .....	3
FRONT BEARING COVER ASSY. ....	4
FRONT CASE ASSY.....	5
INPUT SHAFT ASSY.....	7
INTEGRATED AIR VALVE ASSY .....	8
INTERMEDIATE CASE ASSY. (PTO VERSION) ZY10063, ZY10064 .....	10
INTERMEDIATE CASE ASSY. (ZY10061) .....	12
LAYSHAFT ASSY. ....	14
LRC ASSY.....	15
MAINSHAFT ASSY.....	18
PARTS SUPPLIED IN LOOSE.....	21
PLANET GEAR SPINDLE ASSY. ....	22
RANGE ASSY.....	24
RANGE CONTROL ASSY.....	26
REAR CASE ASSY. (PTO WITH COVER) ZY07163 .....	28
REAR CASE ASSY. (PTO WITH FLANGE VERSION) ZY07164 .....	30
REAR CASE ASSY. (ZY07161) .....	33
REVERSE IDLER ASSY.....	35
SELECTOR ASSY. ....	36

## How To Use The Illustrated Parts List

The information contained in this document is subject to frequent updates. Therefore, for the latest information available, please visit the interactive Electronic Parts Catalog at <http://www.eaton.com/EatonCom/TruckEurope/TruckEurope/index.htm>

### Model Designation and Nomenclature

- For information regarding Model Designation and Nomenclature, visit <http://www.eaton.com/EatonCom/TruckEurope/TruckEurope/index.htm>

### Kits and Assemblies (K/A's)

- Kits or Assemblies contain groups of individual or assembled parts specially developed for optimal replacement during repair.
- Kits and Assemblies are shown with applicable parts groupings in the parts listings.

### Identifying Kits and Assemblies

A- Part numbers beginning with the letter 'A' are pre-assembled Production Assemblies

K- Part numbers beginning with the letter 'K' are kits that are not assembled

T - Part numbers beginning with the letter 'T' are kits that are not assembled

S- Part numbers beginning with the letter 'S' are pre-assembled Service Assemblies

- Note: Some Production Assemblies do not begin with a letter prefix (Midrange only).

### Illustrations

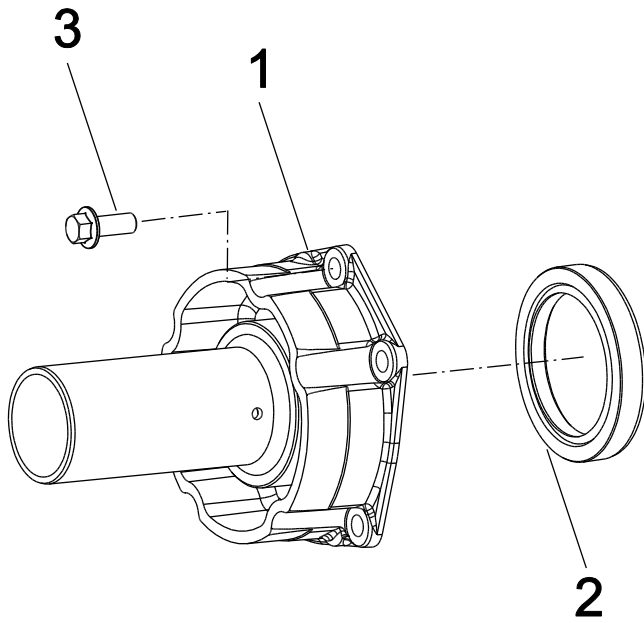
- Illustrations show parts in assembly groups.
- Item numbers on illustrations correspond with parts listings adjacent to the illustration.(on the same or adjacent page)
- Notes are included on illustrations where additional information is needed.

### Parts Listing

Parts listings are defined by parts groupings and are broken down by service assemblies. Parts listings identify a part for servicing with the following categories

- **ITEM** - Number corresponds to number on illustration for part identification.
- **CURRENT PART** - part number of the part available for service.
- **DESCRIPTION** - part name or description.
- **REPLACED PART** - number of replaced part.
- **QTY** - Quantity required for assembly.
- **NOTES** - unique characteristics or requirements.
- **KITS / ASSYS WHERE NEEDED** - kits or assemblies that contain the part.

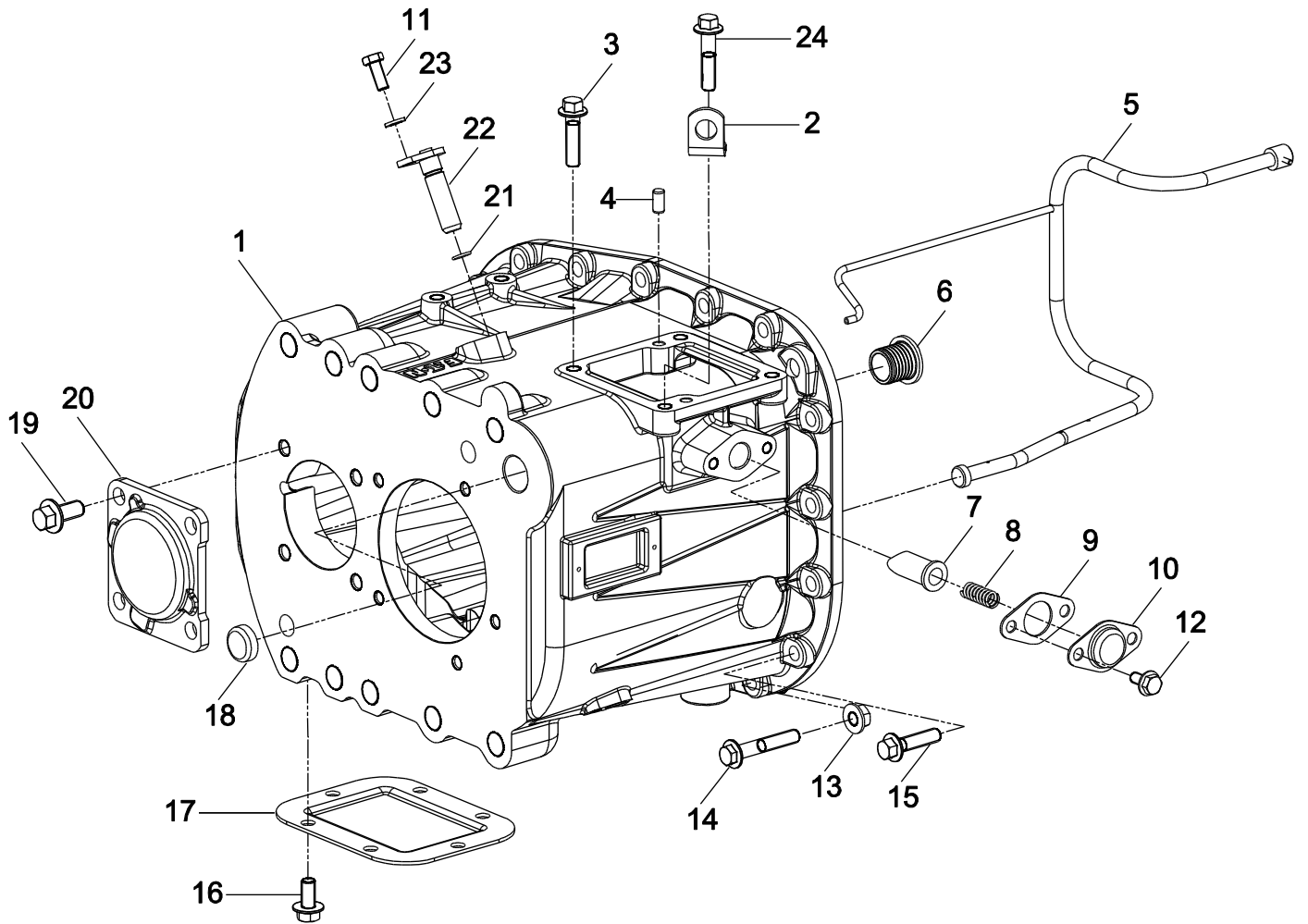
Group: FRONT BEARING COVER ASSY.



# TZ0913

## FRONT BEARING COVER ASSY.

Item	Current Part	Description	Replaced Part	Qty.	Notes	Kits/Assys Where Needed
0	T21262	FRONT COVER ASSEMBLY		1		
0	U8883906	FRONT COVER ASSEMBLY		1		T21262
1	8883901	FRONT BEARING COVER		1		
2	X8870760	OIL SEAL		1		
3	GMX-8-1089	SCREW		5	M10X25 HEX FLG HD	T21262

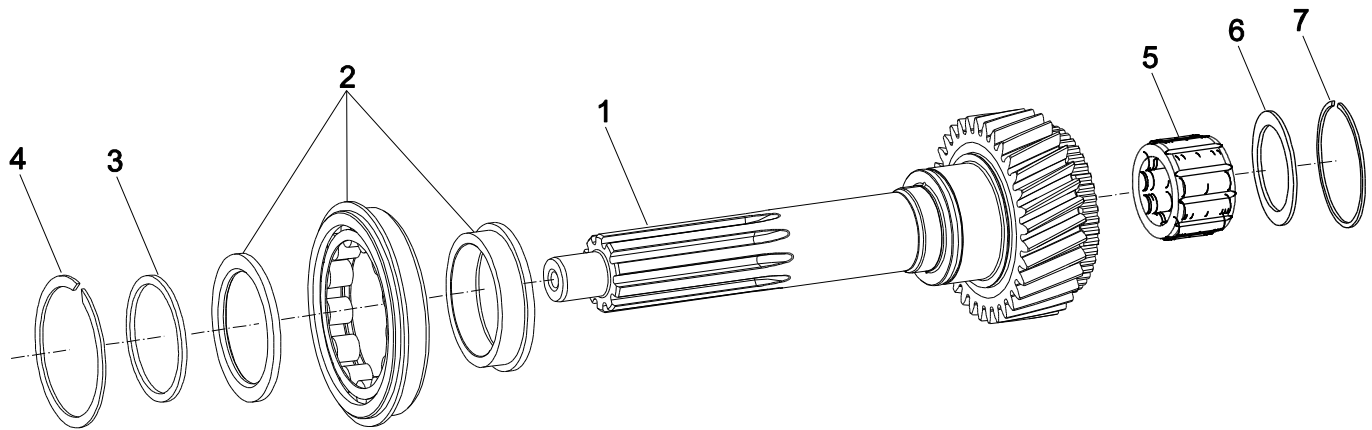


**TZ0910**

**FRONT CASE ASSY**

Item	Current Part	Description	Replaced Part	Qty.	Notes	Kits/Assys Where Needed
0	T21263	FRONT CASE ASSEMBLY		1		
0	U8882246	FRONT CASE ASSY.		1		T21263
1	8882245	FRONT CASE		1		
2	GX8879212	LIFTING EYE		1	Ø15	
3	GMX-8-10121	BOLT		3	M10X40 HEX FLG HD	T21267
4	X8870542	DOWEL		2	Ø8 X 16	T21267
5	U8880098	OIL SPRAY BAR ASSY.		1		
6	8883756	BUSH		1	FOR MAIN SELECTOR SHAFT	

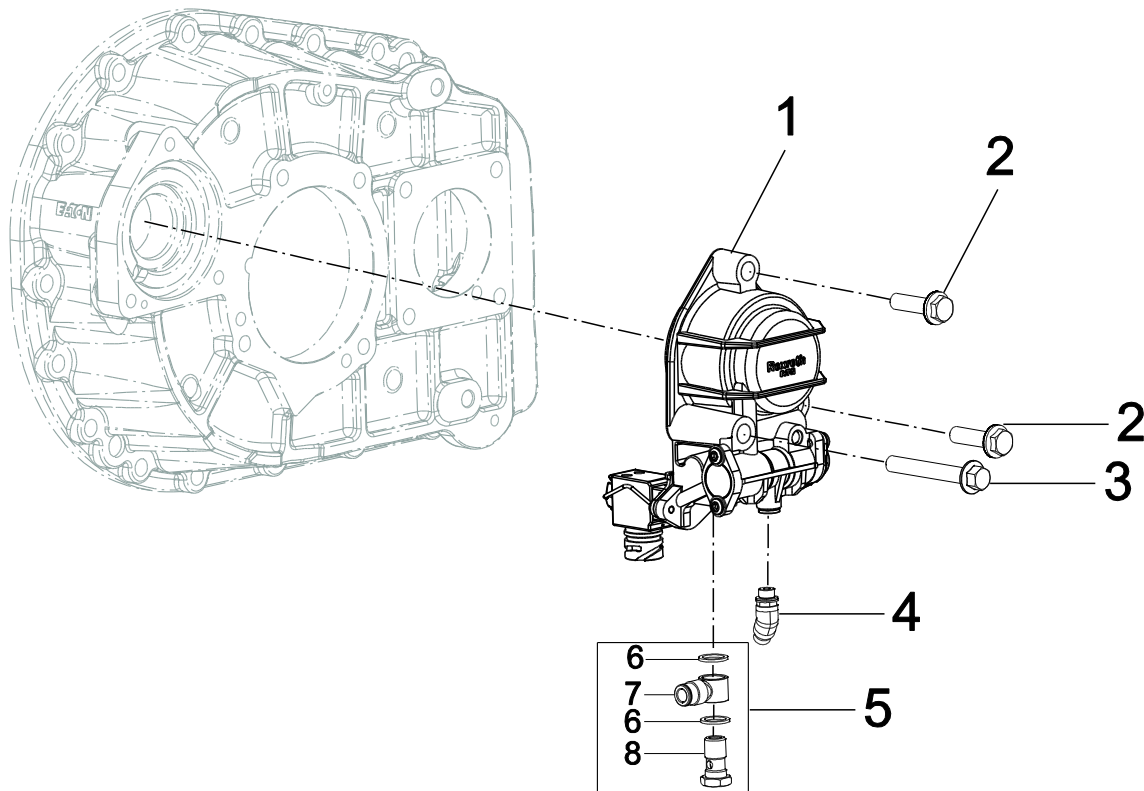
Item	Current Part	Description	Replaced Part	Qty.	Notes	Kits/Assys Where Needed
7	8879101	PLUNGER NEUTRAL		1		
8	8874897	SPRING COMPRESSION		1		
9	8870590	GASKET		1		
10	GX8870259	DETENT COVER		1		
11	GMX-8-0811	SCREW		2	M8X20 HEX HD	
12	GMX-8-0819	SCREW SELF LOCKING		2	M8 X 16 HEX FLG HD	
13	GMX-9-1005	NUT		14	M10 X 1.5 HEX FLG HD	
14	GMX-8-1079	BOLT		4	M10X40 HEX FLG HD	
15	GMX-8-10110	BOLT		13	M10 X 65 HEX FLG HD	
15	GMX-8-1094	BOLT		1	M10X55 HEX FLG HD	
16	MX-8-10117	SCREW		6	M10X20 HEX FLG HD	
17	GX8881616	PTO PROVISION COVER		1		
18	GX8870278	CUP PLUG		1		
19	GMX-8-1240	SCREW		4	M12X25 HEX FLG HD	
20	GX8880554	BEARING COVER LAYSHAFT		1		
21	X8877743	O-RING		2	Ø11.1 X 1.6	
22	GX8872917	ROTATION PIN O/D FORK		2		
23	GMX-3-0801	WASHER SPRING		2	M8	
24	GMX-8-10105	BOLT		1	M10X45 HEX FLG HD	T21267



**TZ0915**

**INPUT SHAFT ASSY.**

Item	Current Part	Description	Replaced Part	Qty.	Notes	Kits/Assys Where Needed
0	T21264	INPUT SHAFT ASSEMBLY		1		
0	U8883938	INPUT SHAFT ASSEMBLY		1		T21264
1	8883982	INPUT SHAFT		1		
2	X8872593	INPUT SHAFT BEARING		1		
3	8877692	SPACER - GRADED 3.10		1	PACK: U8877691	
3	8877693	SPACER - GRADED 3.15		1	PACK: U8877691	
3	8877694	SPACER - GRADED 3.20		1	PACK: U8877691	
3	8877695	SPACER - GRADED 3.25		1	PACK: U8877691	
3	8877696	SPACER - GRADED 3.30		1	PACK: U8877691	
3	8877697	SPACER - GRADED 3.35		1	PACK: U8877691	
3	8877698	SPACER - GRADED 3.40		1	PACK: U8877691	
3	8877699	SPACER - GRADED 3.45		1	PACK: U8877691	
3	8877700	SPACER - GRADED 3.50		1	PACK: U8877691	
3	U8877691	SPACER - GRADED PACK		1		
4	X8877706	CIRCLIP		1		
5	X8883871	BEARING ROLLER		1		
6	8883973	WASHER		1	45 X 60 X 2	
7	X8883981	GRADED CIRCLIP		1	Ø 60	



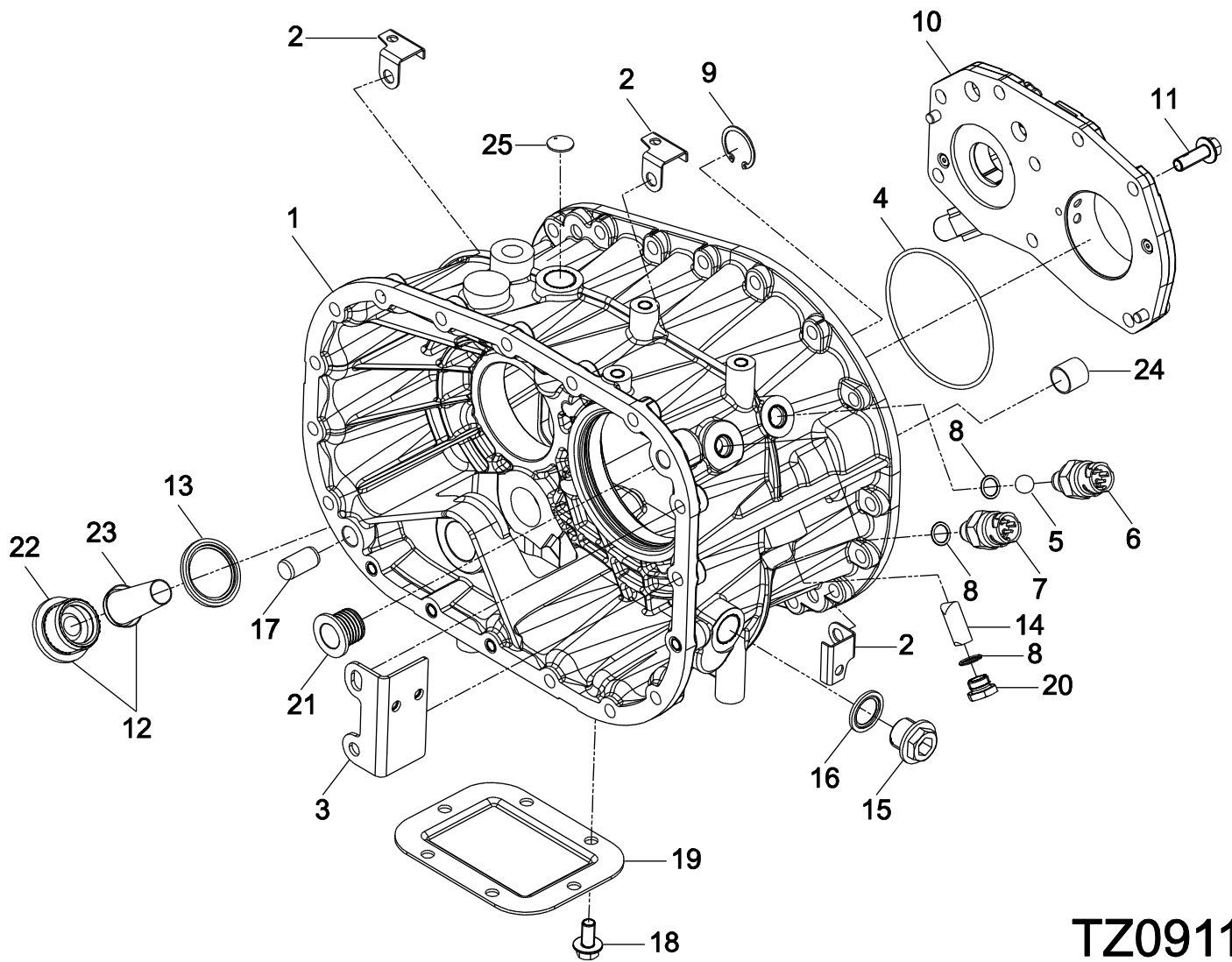
# TZ0918

## INTEGRATED AIR VALVE ASSY

Item	Current Part	Description	Replaced Part	Qty.	Notes	Kits/Assys Where Needed
0	T21265	INTEGRATED RANGE CONTROL ASSY.		1		
0	U8883991	INTEGRATED RANGE CONTROL ASSEMBLY		1		T21265
1	X8882214	INTEGRATED AIR VALVE ELECTRIC		1		
2	GMX-8-1047	SCREW		2	M10 X 35 HEX.FLG.HD	
3	GMX-8-1087	BOLT		1	M10 X 70 HEX FLG HD	
4	X8883964	SWIVEL ELBOW ADAPTOR 45 DEG		1	1/8 BSP TO 8 TUBE	
5	U8883020	BANJO ADAPTOR		1	G1/4 TO 8 TUBE	
6	X8883013	WASHER		2	G 1/4	
7	X8883009	BANJO FITTING		1	8 TUBE.G1/4	



Item	Current Part	Description	Replaced Part	Qty.	Notes	Kits/Assys Where Needed
8	X8883016	BANJO BOLT		1	G1/4	

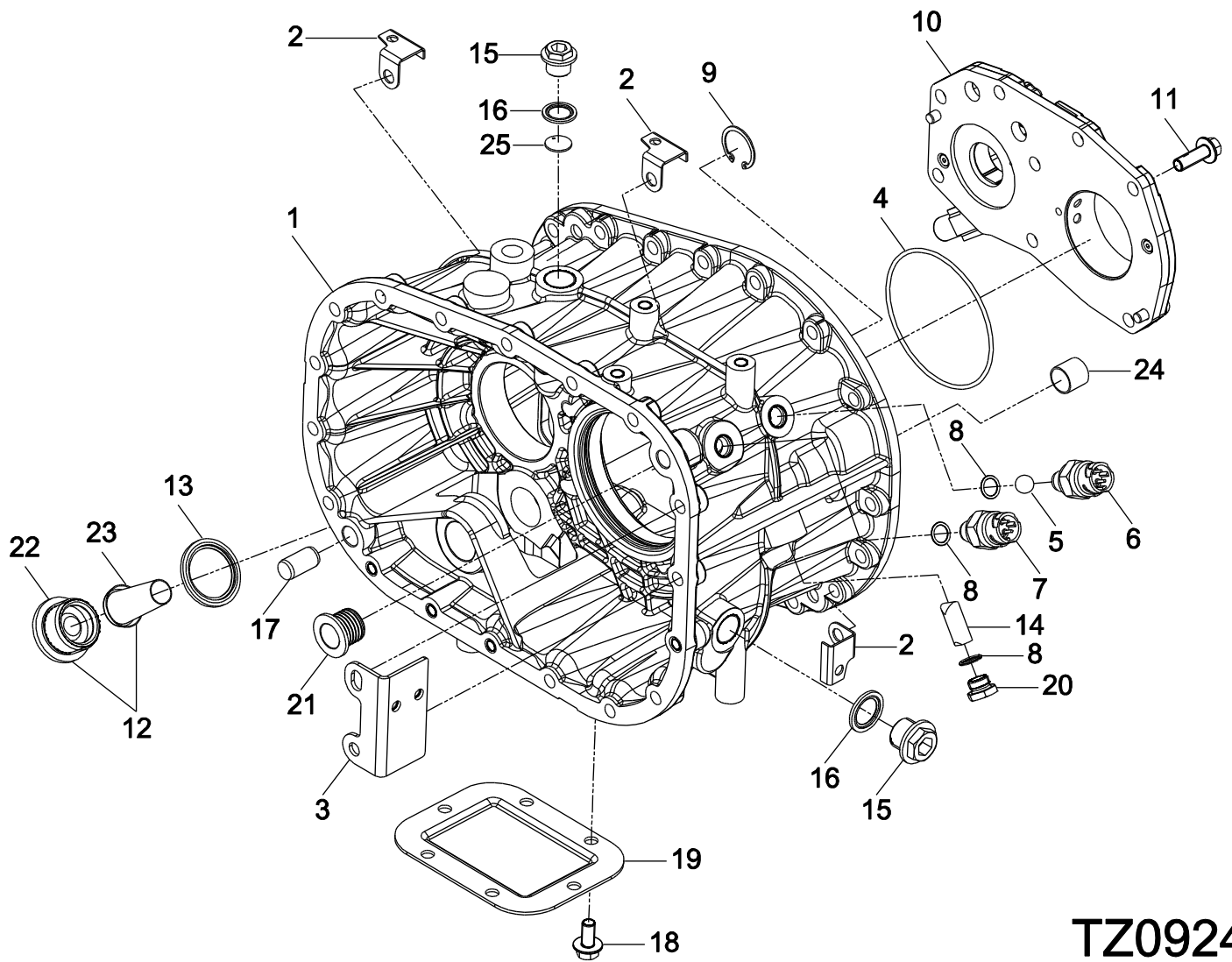


**TZ0911**

**INTERMEDIATE CASE ASSY. (PTO VERSION) ZY10063, ZY10064**

Item	Current Part	Description	Replaced Part	Qty.	Notes	Kits/Assys Where Needed
0	T21259	INTERMEDIATE CASE ASSY.		1		
0	U8877750	INTERMEDIATE CASE ASSY		1		T21259
1	8876418	INTERMEDIATE CASE		1		
2	8883926	BRACKET		3		
3	8883931	BRACKET		1		
4	X8881475	O-RING		1	Ø 109.5 X 3.0	
5	X8870711	BALL		1	Ø 14	
6	8881281	NEUTRAL SWITCH		1		

Item	Current Part	Description	Replaced Part	Qty.	Notes	Kits/Assys Where Needed
7	GX2771532	SWITCH REVERSE / RANGE		1		
8	5568510	O-RING		3	Ø0.53 X 0.082	
9	X8881424	CIRCLIP		1		
10	U8883824	OIL PUMP ASSY.		1		
11	GMX-8-1091	SCREW		8	M10X30 HEX FLG HD	
12	U8876353	OIL STRAINER ASSY.		1		
13	X8880469	WASHER-OIL STRAINER / DRAIN		1		
14	8875267	PIN INTERLOCK		1		
15	GX8874941	MAGNETIC PLUG		1	M24 X 2	
16	X8880519	WASHER-FILLER/DRAIN PLUG		1		
17	X8870543	DOWEL		2	Ø 16 X 30.5	
18	MX-8-10117	SCREW		6	M10X20 HEX FLG HD	
19	GX8881616	PTO PROVISION COVER		1		
20	GX8871502	PLUG		1	M16 X 1.5	
21	8883756	BUSH		1	FOR MAIN SELECTOR SHAFT	
22	GX8876352	PLUG OIL STRAINER		1	M40 X 1.5	
23	8876351	STRAINER-OIL		1		
24	X8871377	BUSH		1		
25	8876744	CORE PLUG OIL RESTRICTOR		1		

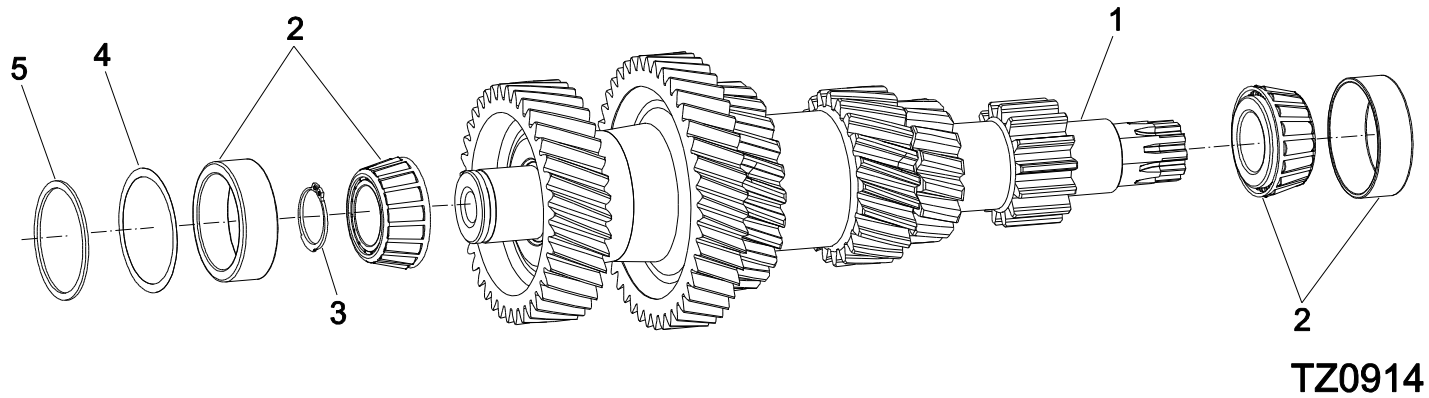


**TZ0924**

**INTERMEDIATE CASE ASSY. (ZY10061)**

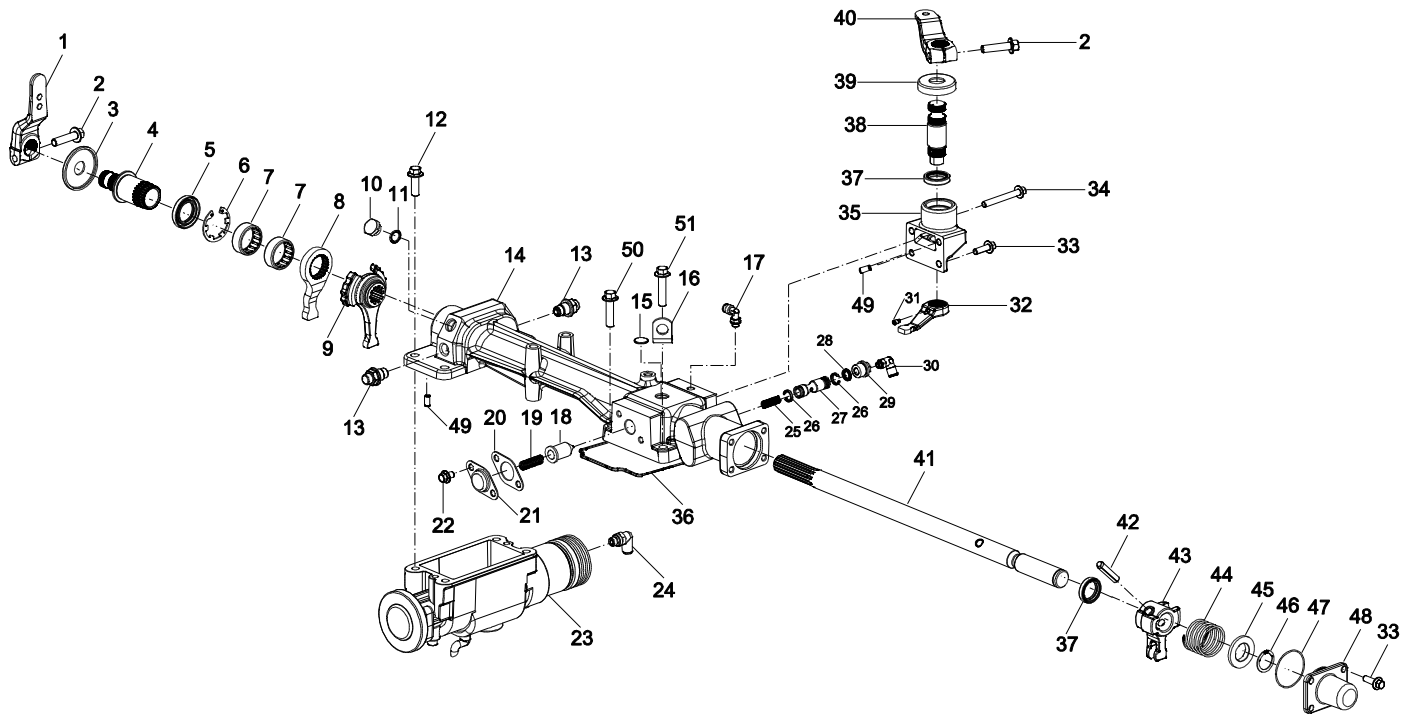
Item	Current Part	Description	Replaced Part	Qty.	Notes	Kits/Assys Where Needed
0	T21259	INTERMEDIATE CASE ASSY.		1		
0	U8877750	INTERMEDIATE CASE ASSY		1		T21259
1	8876418	INTERMEDIATE CASE		1		
2	8883926	BRACKET		3		
3	8883931	BRACKET		1		
4	X8881475	O-RING		1	Ø 109.5 X 3.0	
5	X8870711	BALL		1	Ø 14	
6	8881281	NEUTRAL SWITCH		1		

Item	Current Part	Description	Replaced Part	Qty.	Notes	Kits/Assys Where Needed
7	GX2771532	SWITCH REVERSE / RANGE		1		
8	5568510	O-RING		3	Ø0.53 X 0.082	
9	X8881424	CIRCLIP		1		
10	U8883824	OIL PUMP ASSY.		1		
11	GMX-8-1091	SCREW		8	M10X30 HEX FLG HD	
12	U8876353	OIL STRAINER ASSY.		1		
13	X8880469	WASHER-OIL STRAINER / DRAIN		1		
14	8875267	PIN INTERLOCK		1		
15	GX8874941	MAGNETIC PLUG		2	M24 X 2	
16	X8880519	WASHER-FILLER/DRAIN PLUG		2		
17	X8870543	DOWEL		2	Ø 16 X 30.5	
18	MX-8-10117	SCREW		6	M10X20 HEX FLG HD	
19	GX8881616	PTO PROVISION COVER		1		
20	GX8871502	PLUG		1	M16 X 1.5	
21	8883756	BUSH		1	FOR MAIN SELECTOR SHAFT	
22	GX8876352	PLUG OIL STRAINER		1	M40 X 1.5	
23	8876351	STRAINER-OIL		1		
24	X8871377	BUSH		1		
25	8876744	CORE PLUG OIL RESTRICTOR		1		



### LAYSHAFT ASSY.

Item	Current Part	Description	Replaced Part	Qty.	Notes	Kits/Assys Where Needed
0	T21266	LAYSHAFT ASSY.		1		
1	U8883425	LAYSHAFT ASSEMBLY		1		T21266
2	X8880820	BEARING ASSEMBLY		2		
3	U8877534	CIRCLIP GRADED PACK		1		
3	X8870370	GR.C/CLIP 40 DIA. X 2.12		1		
3	X8870371	GR.C/CLIP 40 DIA. X 2.07		1		
3	X8870372	GR.C/CLIP 40 DIA X 2.02		1		
3	X8871536	GR.C/CLIP 40 DIA. X 1.97		1		
3	X8871537	GR.C/CLIP 40 DIA. X 1.92		1		
3	X8871538	GR.C/CLIP 40 DIA. X 1.87		1		
3	X8871539	GR.C/CLIP 40 DIA. X 1.82		1		
3	X8871540	GR.C/CLIP 40 DIA. X 1.77		1		
4	F88891	SHIM		1	S=0.051	
4	F88892	SHIM		1	S=0.127	
4	F88893	SHIM		1	S=0.254	
4	F88894	SHIM		1	S=0.508	
4	U8877535	SHIM PACK		1		
4	X8882272	SHIM		1	S=1.200	
5	8875879	SPACER		1		



TZ0912

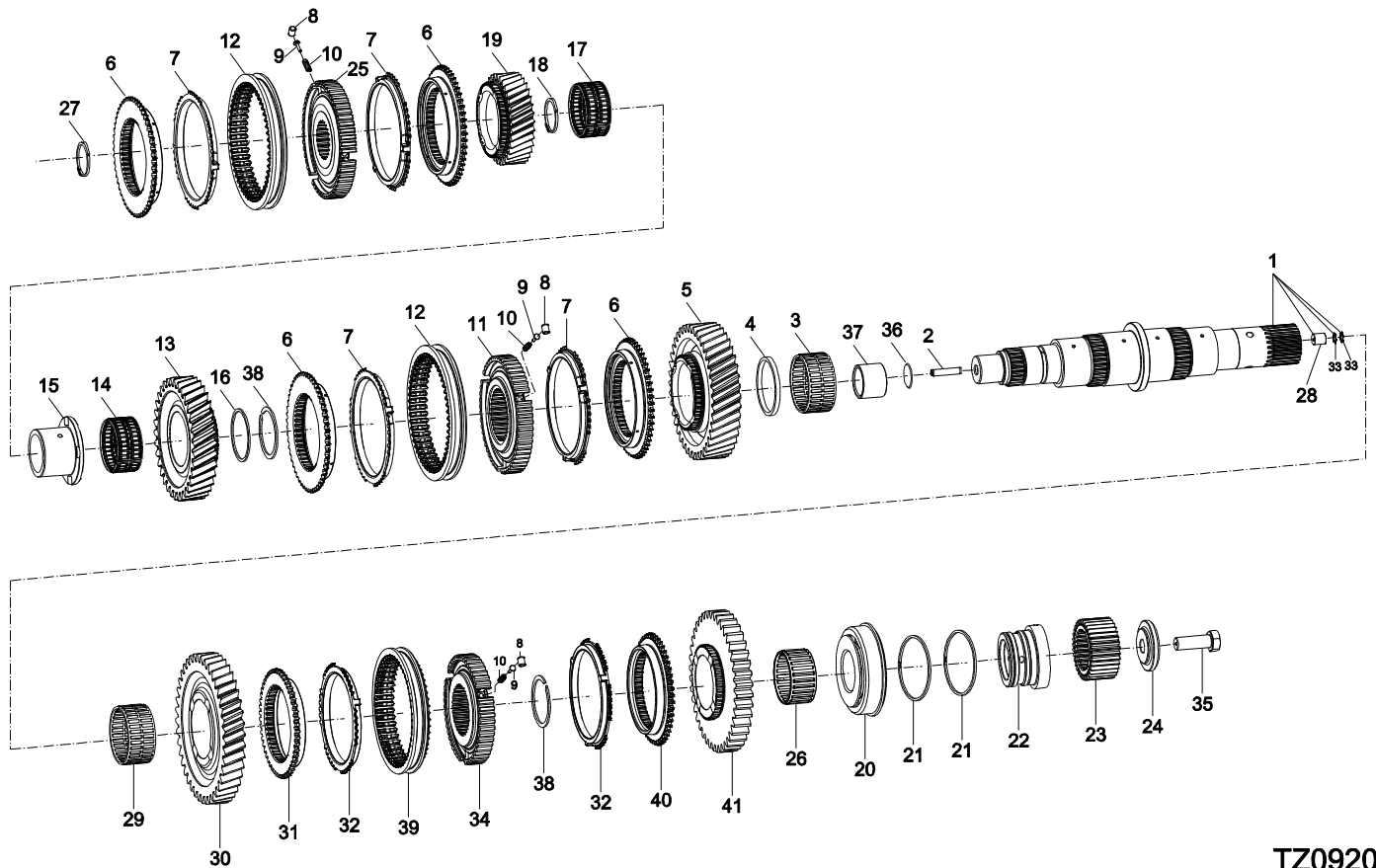
## LRC ASSY.

Item	Current Part	Description	Replaced Part	Qty.	Notes	Kits/Assys Where Needed
0	T21267	LRC HOUSING ASSY.		1		
0	T21268	LRC ASSY. KIT		1		
1	GX8882919	OUTER LEVER		1		
2	GMX-8-1079	BOLT		2	M10X40 HEX FLG HD	
3	8879034	DIRT SHIELD		1		
4	8879355	LRC SHAFT - INPUT		1		
5	X8878914	OIL SEAL		1		
6	X8878910	CIRCLIP		1		
7	X8878304	DRAWN CUP NEEDLE ROLLER BEARING		2		
8	8879356	LEVER INPUT		1		
9	8879357	LEVER OUTPUT		1		
10	GX8871502	PLUG		1	M16 X 1.5	
11	5568510	O-RING		1	Ø0.53 X 0.082	
12	GMX-8-	SCREW		4	M10X30 HEX FLG HD	

Item	Current Part	Description	Replaced Part	Qty.	Notes	Kits/Assys Where Needed
	1091					
13	X8879204	DETENT		2		
14	U8883898	LRC SUB-ASSEMBLY		1		
15	GX8871486	EXPANSION PLUG		1		
16	GX8879212	LIFTING EYE		1	Ø15	
17	X8880846	ELBOW ARTICULATED		1	G1/8 TO Ø6 TUBE	
18	8875415	PLUNGER - DETENT		1		
19	8874819	DETENT SPRING		1		
20	8870590	GASKET		1		
20	GMX-8-0848	SCREW		2	M8 X 12 HEX FLG HD	
21	GX8870259	DETENT COVER		1		
22	GMX-8-0848	SCREW		2	M8 X 12 HEX FLG HD	
23	X8883959	PPA ASSEMBLY		1		
24	X8881591	SWIVEL ELBOW ADAPTOR		1	90° , M12x1.5 TO Ø6 TUBE	
25	8881333	SPRING COMPRESSION		1		
26	X8882129	SLIDE RING		2		
27	8882126	PISTON		1		
28	X8882252	PISTON SEALING		1		
29	8882133	ADAPTOR BUSH		1		
30	X8883965	SWIVEL ELBOW ADAPTOR		1	90° , G1/8 TO Ø8 TUBE	
31	MX-11-0601	SCREW		1	M6 X 10 SKT HD SET	T21268
32	8883566	INNER STRIKING LEVER		1		T21268
33	GMX-8-0847	SCREW		5	M8X25 HEX FLG HD	T21268
34	GMX-8-0858	SCREW		1	M8X65 HEX FLG HD	
	T21268					
35	U8883562	CROSS GATE HOUSING		1		T21268
36	8880638	SEAL		1		T21267
37	X8881481	OIL SEAL		2		T21268
38	8883565	SHAFT CROSS GATE		1		T21268



Item	Current Part	Description	Replaced Part	Qty.	Notes	Kits/Assys Where Needed
39	8881876	DIRT SHIELD		1		T21268
40	GX8883990	LEVER		1		T21268
41	8883897	SELECTOR SHAFT		1		
42	X8871378	DOWEL		1	Ø10 X 44	
43	8879002	FINGER INNER STRIKING		1		T21267
44	8876345	BOOSTER SPRING		1		T21267
45	8876566	SPRING RETAINER- BOOSTER		1		T21267
46	X8874450	CIRCLIP		1	Ø25	T21267
47	X8880639	O-RING		1	Ø5.1 X 1.6	T21267
48	8880477	END CAP		1		T21267
49	X8870542	DOWEL		4	Ø8 X 16	T21267
50	GMX-8- 10121	BOLT		3	M10X40 HEX FLG HD	T21267
51	GMX-8- 10105	BOLT		1	M10X45 HEX FLG HD	T21267



TZ0920

## MAINSHAFT ASSY.

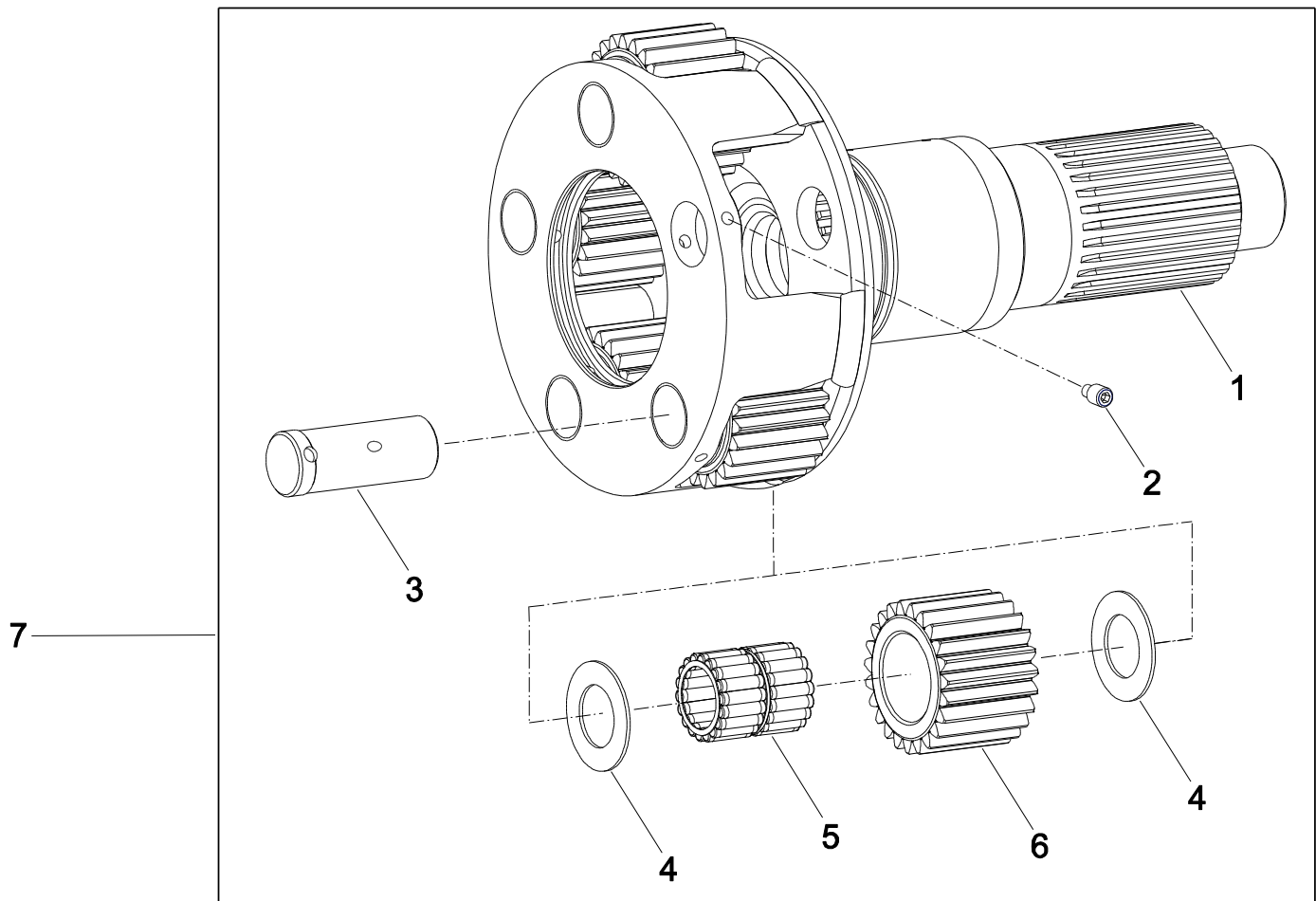
Item	Current Part	Description	Replaced Part	Qty.	Notes	Kits/Assys Where Needed
0	T21269	MAINSHAFT ASSY.		1		
0	U8883957	MAINSHAFT ASSEMBLY		1		T21269
1	U8883955	MAINSHAFT		1		
2	X14851	DOWEL		1	Ø5/16 X 1.5	
3	X8870177	NEEDLE ROLLER BRG. ASSY		1		
4	8872589	GEAR SPACER 1ST		1		
5	8883992	GEAR MAINSHAFT 1ST		1		
6	8883043	SYNCHRO FLANGE		4		
7	8883044	SYNCHRO RING		4		
8	X8870356	ROLLER		9		
9	8870352	PLUNGER		9		
10	8870444	SPRING COMPRESSION		9		
11	8883969	HUB-FIXED 1ST/2ND		1		

Item	Current Part	Description	Replaced Part	Qty.	Notes	Kits/Assys Where Needed
12	8880460	SLIDING SLEEVE		2		
13	8883971	GEAR MAINSHAFT 2ND		1		
14	X8883905	NEEDLE BEARING		1		
15	8883967	SLEEVE MAINSHAFT BEARING		1		
16	8883974	SPACER 2ND GEAR		1		
17	X8883905	NEEDLE BEARING		1		
18	8883975	GEAR SPACER 3RD		1		
19	8883972	GEAR MAINSHAFT 4TH		1		
20	X8877164	BEARING REAR MAINSHAFT		1		
21	X8875532	SEALING RING		2		
22	8883434	OIL MUFF		1		
23	8883396	SUN GEAR		1		
24	8880594	RETAINER		1		
25	8883968	FIXED HUB 3RD/4TH		1		
26	X8870178	NEEDLE ROLLER BRG. ASSY		1		
27	U8883944	GRADED CIRCLIP PACK		1		
27	X8883976	GRADED CIRCLIP DIA 42 X 2.48		1		
27	X8883977	GRADED CIRCLIP DIA 42 X 2.43		1		
27	X8883978	GRADED CIRCLIP DIA 42 X 2.38		1		
27	X8883979	GRADED CIRCLIP DIA 42 X 2.33		1		
27	X8883980	GRADED CIRCLIP DIA 42 X 2.28		1		
28	8874066	PLUG		1		
29	X8870177	NEEDLE ROLLER BRG. ASSY		1		
30	8876477	GEAR MAINSHAFT CRAWLER		1		
31	8881280	SYNCHRO FLANGE REVERSE		1		
32	8877313	SYNCHRO RING		2		
33	8874074	RING		2		

Item	Current Part	Description	Replaced Part	Qty.	Notes	Kits/Assys Where Needed
34	8875604	FIXED HUB REVERSE/CRAWLER		1		
35	GX8870699	SCREW		1	M16X45 HEX HD	
36	8876298	RESTRICTOR		1		
37	8878557	SLEEVE		1		
38	U8877532	GRADED CIRCLIP PACK		1	AS REQUIRED	
38	X8870378	CIRCLIP-GR.DIA.60 X 2.10		1	AS REQUIRED	
38	X8870379	CIRCLIP-GR.DIA.60 X 2.05		1	AS REQUIRED	
38	X8870380	CIRCLIP-GR.DIA.60 X 2.00		1	AS REQUIRED	
39	8880461	SLIDING SLEEVE		1		
40	8877316	SYNCHRO FLANGE		1		
41	8876478	GEAR MAINSHAFT REVERSE		1		

## PARTS SUPPLIED IN LOOSE

Item	Current Part	Description	Replaced Part	Qty.	Notes	Kits/Assys Where Needed
1	8882102	WIRE		1		
2	8883927	KNOB SHIFT		1		
3	8883966	SHIFTER SKIRT CONNECTION PART		1		
4	8883928	WIRING GEAR KNOB		1		
5	GMX-8- 1405	BOLT		4	M14X1.5X55 HEX HD	
6	GMX-8- 10124	BOLT		2	M10X100 HEX FLG HD	



TZ0916

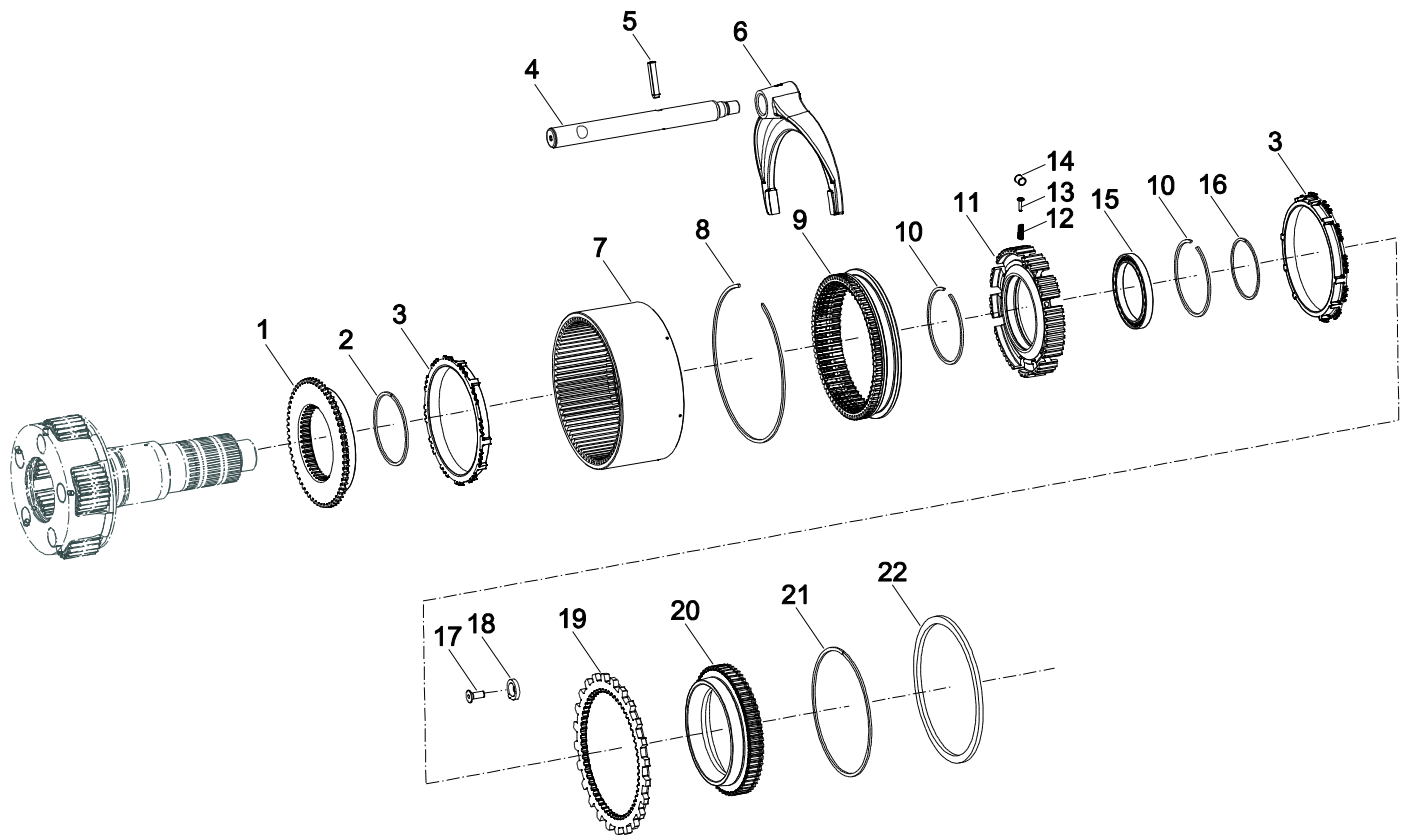
**PLANET GEAR SPINDLE ASSY.**

Item	Current Part	Description	Replaced Part	Qty.	Notes	Kits/Assys Where Needed
0	T21272	OUTPUT SHAFT ASSY.		1		
1	U8883331	OUTPUT SHAFT ASSY		1		T21272
2	MX-11-0601	SCREW		5	M6 X 10 SKT HD SET	T21268
3	8883312	SPINDLE		5		
4	8876893	WASHER		10		
5	U8875235	NEEDLE ROLLER BRG. ASSY.		5		
6	8883397	GEAR PLANET		5		
7	U8883336	PLANET GEAR SPINDLE		1		

---

Item	Current Part	Description	Replaced Part	Qty.	Notes	Kits/Assys Where Needed
		ASSY				

---



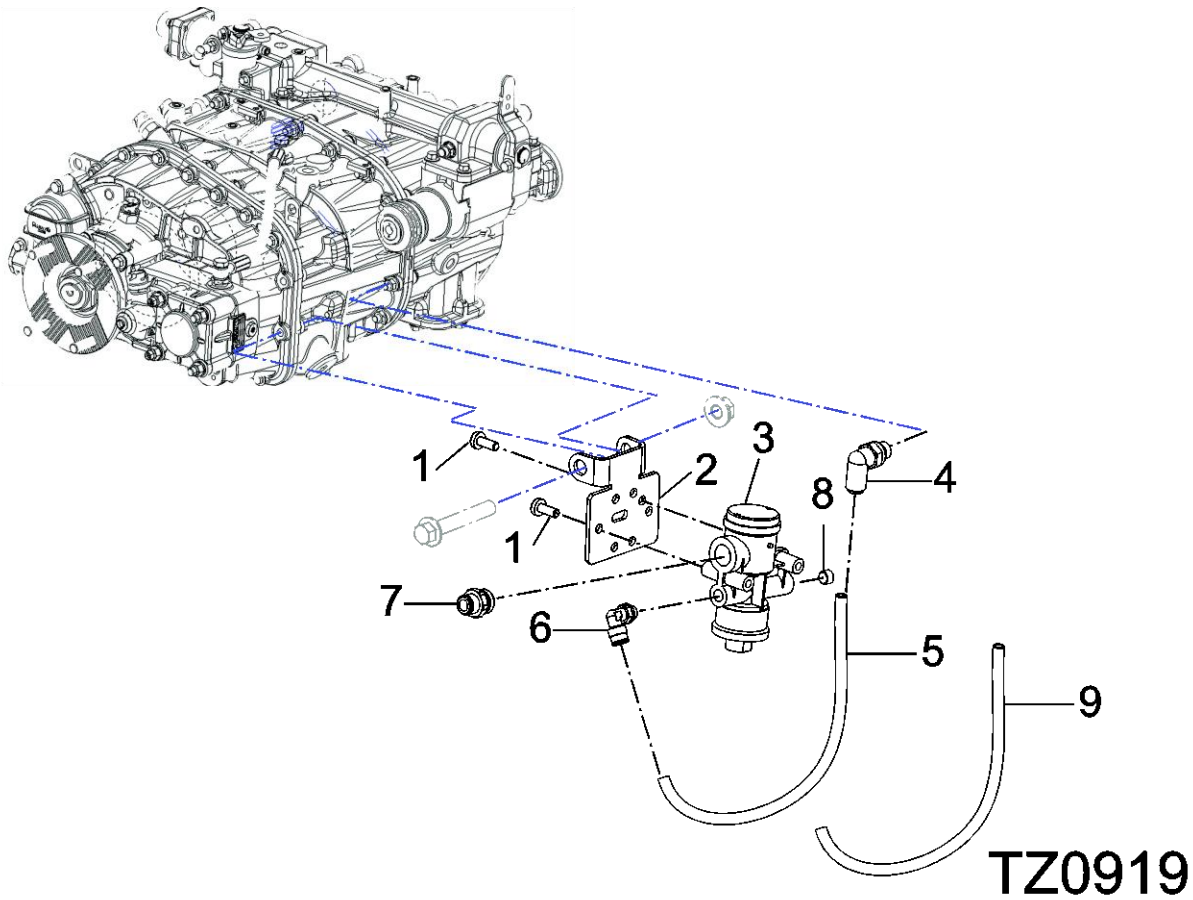
TZ0922

**RANGE ASSY.**

Item	Current Part	Description	Replaced Part	Qty.	Notes	Kits/Assys Where Needed
0	T21276	RANGE ASSY.		1		
0	U8883422	RANGE ASSY.		1		T21276
1	8877323	SYNCHRO FLANGE		1		
2	X8870342	CIRCLIP		1		
3	8877442	SYNCHRO RING - RANGE		2		
4	8872626	HI-LO SHIFT ROD		1		
5	X8878665	DOWEL		1		
6	8883677	HIGH/LOW RANGE SHIFT FORK		1		
7	8880231	ANNULUS		1		
8	X8875296	CIRCLIP		1		
9	8883372	SLIDING SLEEVE		1		
10	X8870341	CIRCLIP		1		



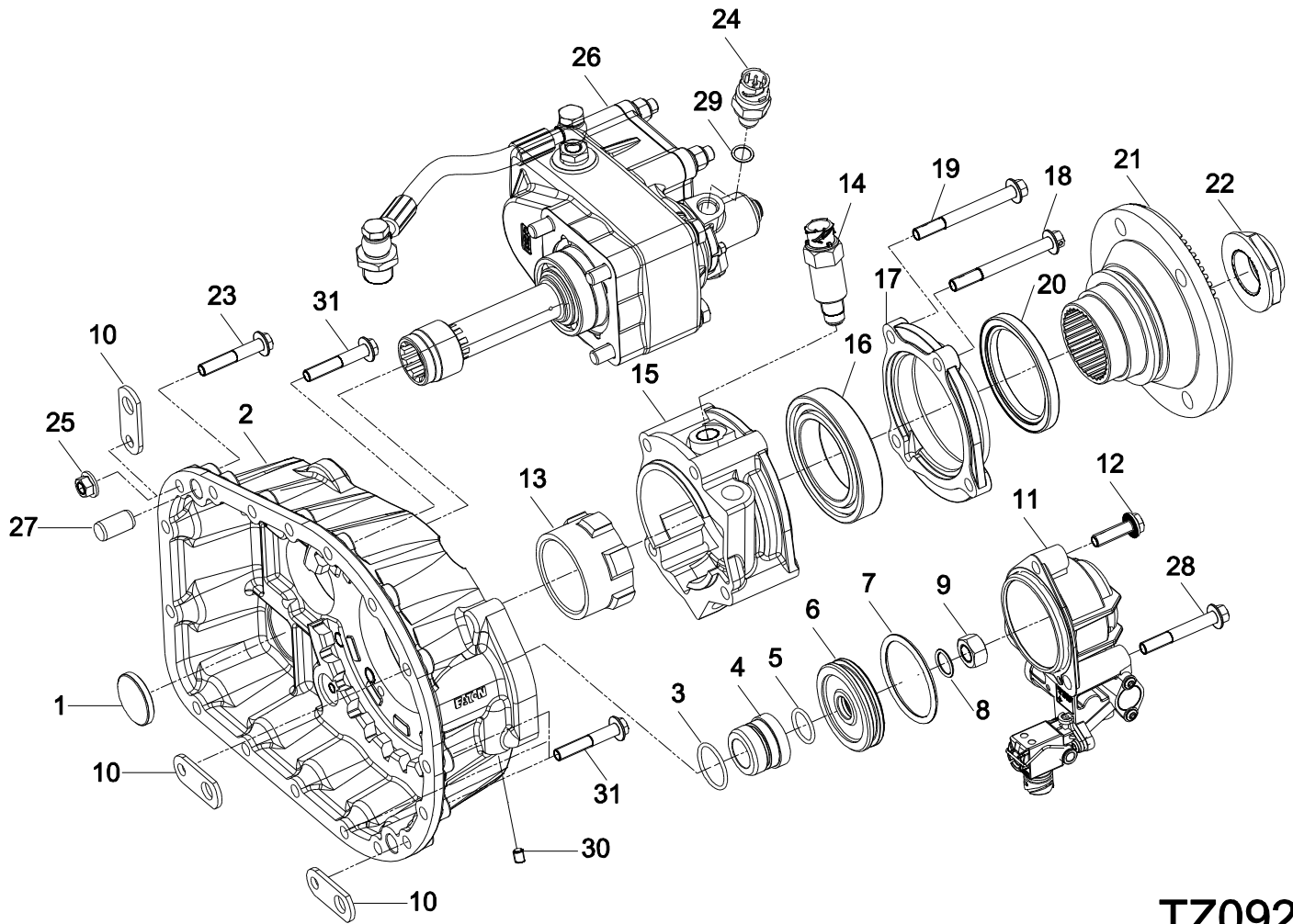
Item	Current Part	Description	Replaced Part	Qty.	Notes	Kits/Assys Where Needed
11	8875881	FIXED HUB		1		
12	8870444	SPRING COMPRESSION		9		
13	8870352	PLUNGER		9		
14	X8870355	ROLLER		9		
15	X8870844	BEARING		1		
16	X8870344	CIRCLIP		1		
17	GMX-8-0806	SCREW		3	M8 X 20	
18	8870848	RETAINER		3		
19	8875646	REACTION PLATE		1		
20	8877322	SYNCHRO FLANGE		1		
21	X8873993	CIRCLIP		1		
22	8870808	SPACER		1		



## RANGE CONTROL ASSY.

Item	Current Part	Description	Replaced Part	Qty.	Notes	Kits/Assys Where Needed
0	T21273	AIR SYSTEM PPA		1		
0	U8883916	AIR SYSTEM PPA		1		T21273
1	X8880151	TORX SCREW		2	M16 X 16	
2	8880659	MOUNTING BRACKET		1		
3	X8883962	FILTER REGULATOR		1	4 BAR	
4	X8881591	SWIVEL ELBOW ADAPTOR		1	90° , M12x1.5 TO Ø6 TUBE	
5	X8881545	NYLON TUBE 6		1	LENGTH 400 MM	
6	X8880846	ELBOW ARTICULATED		1	G1/8 TO Ø6 TUBE	
7	X8884009	STRAIGHT ADAPTOR		1	G3/8 TO Ø8 TUBE	
8	GX2013517	PIPE PLUG		1	1/8 X 27 PTF-7/8	
9	X8884000	PROTECTIVE SLEEVE		1	LENGTH 380	



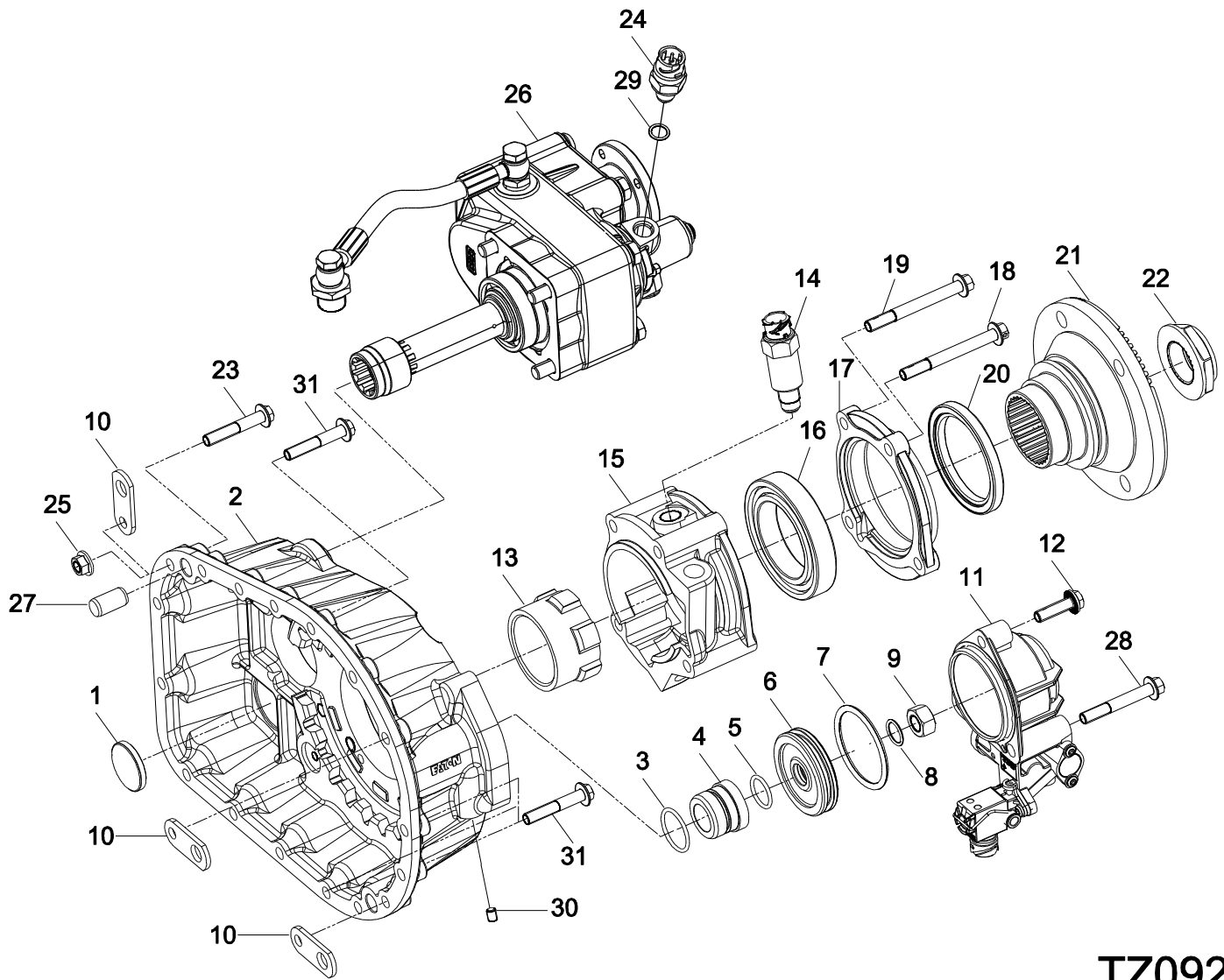


TZ0921

**REAR CASE ASSY. (PTO WITH COVER) ZY07163**

Item	Current Part	Description	Replaced Part	Qty.	Notes	Kits/Assys Where Needed
0	T21274	REAR CASE ASSY.		1		
0	U8883338	REAR CASE ASSY.		1		T21274
1	14373	DISC MAGNET		1		
2	8882337	REAR CASING		1		
3	X8875292	O-RING		1	Ø34.5 X 3	
4	8878240	BUSH		1		
5	X8871258	O-RING		1	Ø24.5 X 3	
6	8875179	PISTON RANGE CYLINDER		1		
7	14344	PISTON O RING		1	Ø2.6 X 0.21	
8	14345	PISTON O RING		1	Ø0.737 X 0.103	

Item	Current Part	Description	Replaced Part	Qty.	Notes	Kits/Assys Where Needed
9	GMX-9-1602	NUT		1	M16	
10	GX8879211	LIFTING EYE		3	Ø15.3	
11	X8882214	INTEGRATED AIR VALVE ELECTRIC		1		
12	GMX-8-1047	SCREW		2	M10 X 35 HEX.FLG.HD	
13	8884010	TACHOGRAPH ROTOR		1		
14	X8883716	PICKUP ELECTRONIC SPEEDO		1		
15	8874013	SPEEDO HOUSING		1		
16	X8872721	BEARING		1		
17	8871992	REAR COVER		1		
18	GMX-8-1095	BOLT		3	M10X95 HEX FLG HD	
19	GMX-8-1096	BOLT		1	M10X95 HEX FLG HD	
20	X8872722	OIL SEAL		1		
21	8882621	COUPLING FLANGE		1		
22	GX8870553	NUT		1	M39 X 1.5 HEX FLG HD	
23	GMX-8-10110	BOLT		12	M10 X 65 HEX FLG HD	
23	GMX-8-10111	BOLT		1	M10X65 HEX FLG HD	
24	8881281	NEUTRAL SWITCH		1		
25	GMX-9-1005	NUT		17	M10 X 1.5 HEX FLG HD	
26	X8883541	PTO REAR ASSY 800NM		1		
27	X8870543	DOWEL		2	Ø 16 X 30.5	
28	GMX-8-1087	BOLT		1	M10 X 70 HEX FLG HD	
29	5568510	O-RING		1	Ø0.53 X 0.082	
30	GMX-8-0857	PLUG		1	M8 X 1.25	
31	GMX-8-1080	BOLT		4	M10X60 HEX FLG HD	



**TZ0925**

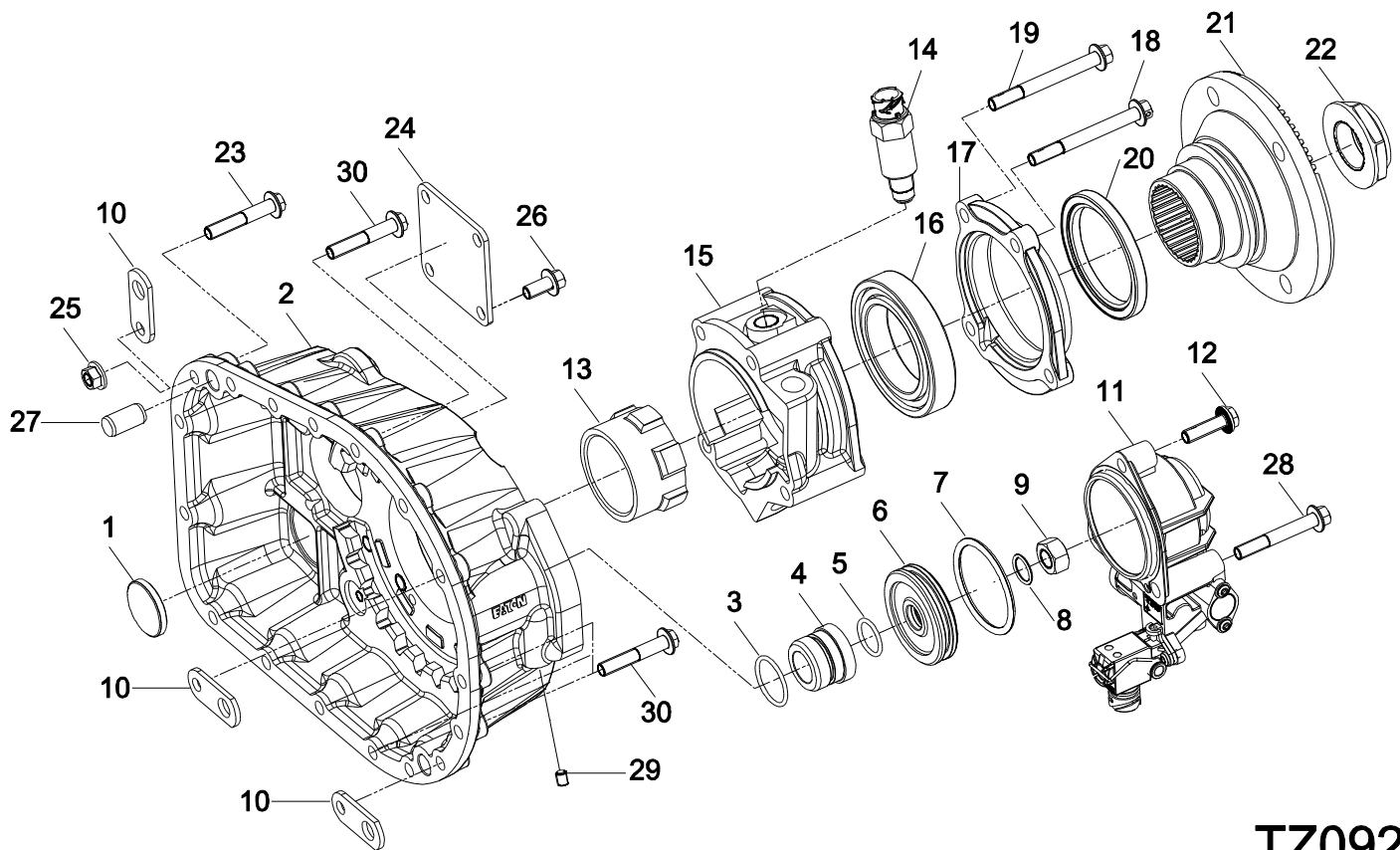
**REAR CASE ASSY. (PTO WITH FLANGE VERSION) ZY07164**

Item	Current Part	Description	Replaced Part	Qty.	Notes	Kits/Assys Where Needed
0	T21274	REAR CASE ASSY.		1		
0	U8883338	REAR CASE ASSY.		1		T21274
1	14373	DISC MAGNET		1		
2	8882337	REAR CASING		1		
3	X8875292	O-RING		1	Ø34.5 X 3	
4	8878240	BUSH		1		
5	X8871258	O-RING		1	Ø24.5 X 3	
6	8875179	PISTON RANGE CYLINDER		1		

Item	Current Part	Description	Replaced Part	Qty.	Notes	Kits/Assys Where Needed
7	14344	PISTON O RING		1	Ø2.6 X 0.21	
8	14345	PISTON O RING		1	Ø0.737 X 0.103	
9	GMX-9-1602	NUT		1	M16	
10	GX8879211	LIFTING EYE		3	Ø15.3	
11	X8882214	INTEGRATED AIR VALVE ELECTRIC		1		
12	GMX-8-1047	SCREW		2	M10 X 35 HEX.FLG.HD	
13	8884010	TACHOGRAPH ROTOR		1		
14	X8883716	PICKUP ELECTRONIC SPEEDO		1		
15	8874013	SPEEDO HOUSING		1		
16	X8872721	BEARING		1		
17	8871992	REAR COVER		1		
18	GMX-8-1095	BOLT		3	M10X95 HEX FLG HD	
19	GMX-8-1096	BOLT		1	M10X95 HEX FLG HD	
20	X8872722	OIL SEAL		1		
21	8882621	COUPLING FLANGE		1		
22	GX8870553	NUT		1	M39 X 1.5 HEX FLG HD	
23	GMX-8-10110	BOLT		12	M10 X 65 HEX FLG HD	
23	GMX-8-10111	BOLT		1	M10X65 HEX FLG HD	
24	8881281	NEUTRAL SWITCH		1		
25	GMX-9-1005	NUT		17	M10 X 1.5 HEX FLG HD	
26	X8883923	PTO REAR ASSY. 800NM		1		
27	X8870543	DOWEL		2	Ø 16 X 30.5	
28	GMX-8-1087	BOLT		1	M10 X 70 HEX FLG HD	
29	5568510	O-RING		1	Ø0.53 X 0.082	
30	GMX-8-0857	PLUG		1	M8 X 1.25	
31	GMX-8-1080	BOLT		4	M10X60 HEX FLG HD	





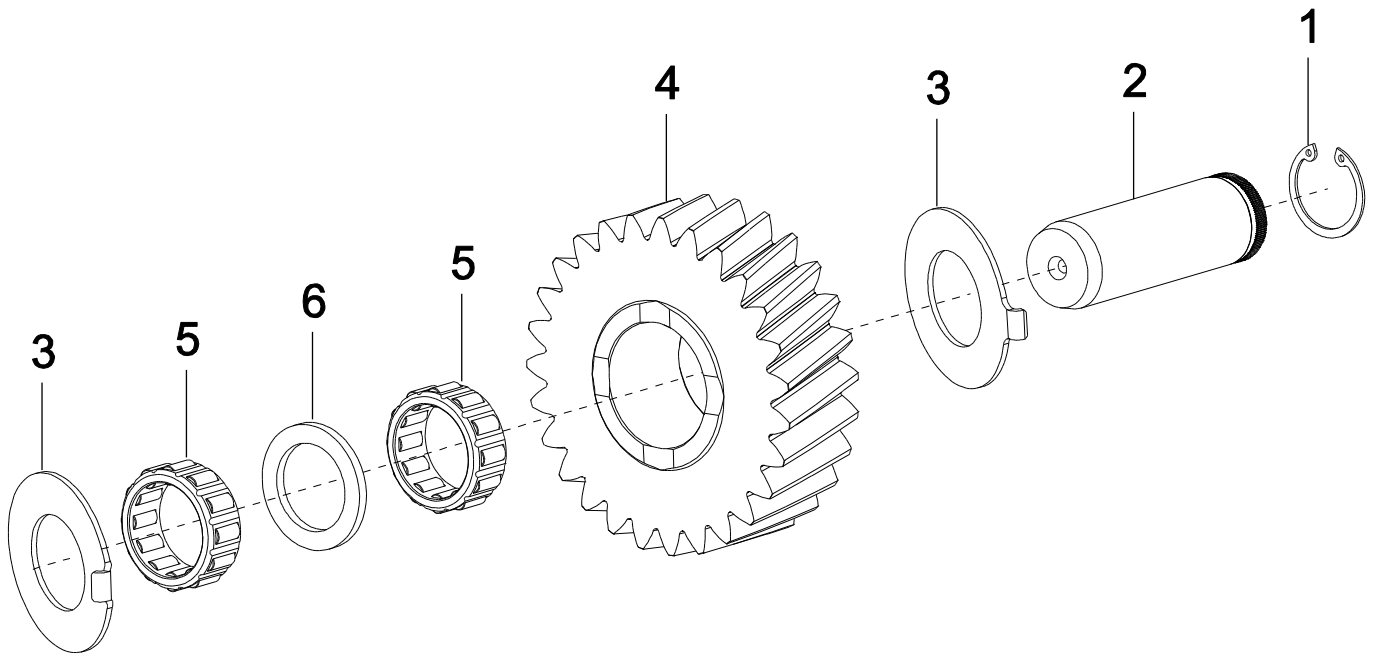


**TZ0923**

**REAR CASE ASSY. (ZY07161)**

Item	Current Part	Description	Replaced Part	Qty.	Notes	Kits/Assys Where Needed
0	T21274	REAR CASE ASSY.		1		
0	U8883338	REAR CASE ASSY.		1		T21274
1	14373	DISC MAGNET		1		
2	8882337	REAR CASING		1		
3	X8875292	O-RING		1	Ø34.5 X 3	
4	8878240	BUSH		1		
5	X8871258	O-RING		1	Ø24.5 X 3	
6	8875179	PISTON RANGE CYLINDER		1		
7	14344	PISTON O RING		1	Ø2.6 X 0.21	
8	14345	PISTON O RING		1	Ø0.737 X 0.103	
9	GMX-9-1602	NUT		1	M16	
10	GX8879211	LIFTING EYE		3	Ø15.3	

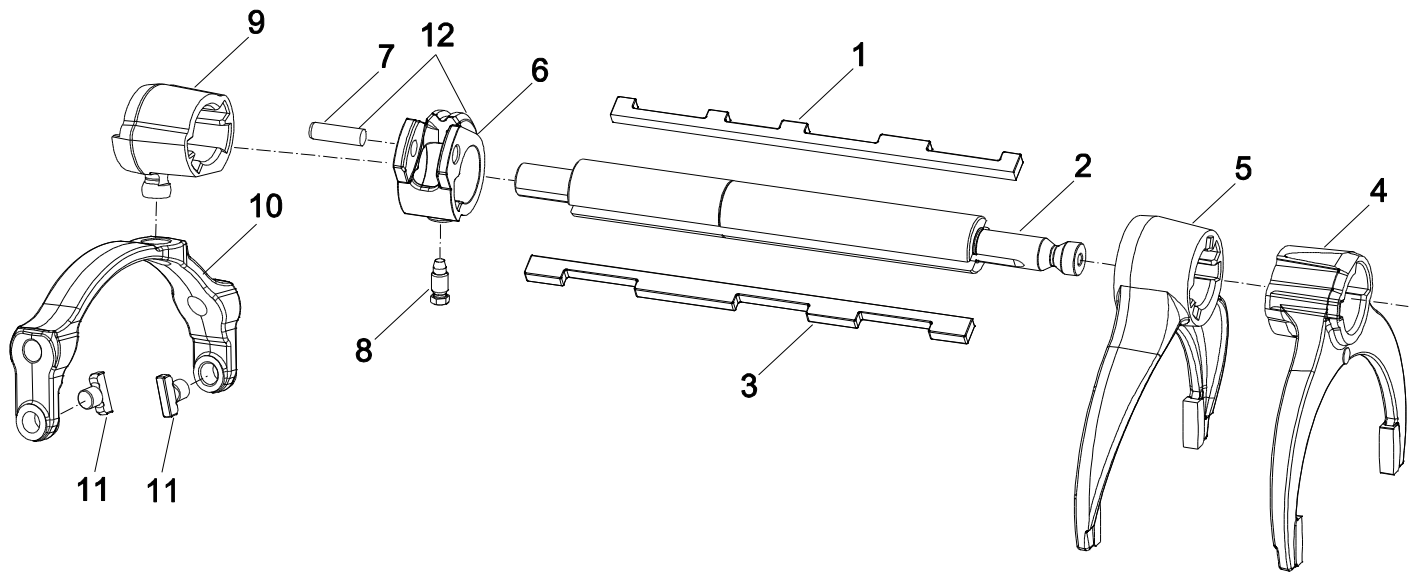
Item	Current Part	Description	Replaced Part	Qty.	Notes	Kits/Assys Where Needed
11	X8882214	INTEGRATED AIR VALVE ELECTRIC		1		
12	GMX-8- 1047	SCREW		2	M10 X 35 HEX.FLG.HD	
13	8884010	TACHOGRAPH ROTOR		1		
14	X8883716	PICKUP ELECTRONIC SPEEDO		1		
15	8874013	SPEEDO HOUSING		1		
16	X8872721	BEARING		1		
17	8871992	REAR COVER		1		
18	GMX-8- 1095	BOLT		3	M10X95 HEX FLG HD	
19	GMX-8- 1096	BOLT		1	M10X95 HEX FLG HD	
20	X8872722	OIL SEAL		1		
21	8882621	COUPLING FLANGE		1		
22	GX8870553	NUT		1	M39 X 1.5 HEX FLG HD	
23	GMX-8- 10110	BOLT		12	M10 X 65 HEX FLG HD	
23	GMX-8- 10111	BOLT		1	M10X65 HEX FLG HD	
24	GX8873917	LAYSHAFT REAR COVER		1		
25	GMX-9- 1005	NUT		17	M10 X 1.5 HEX FLG HD	
26	GMX-8- 1240	SCREW		4	M12X25 HEX FLG HD	
27	X8870543	DOWEL		2	Ø 16 X 30.5	
28	GMX-8- 1087	BOLT		1	M10 X 70 HEX FLG HD	
29	GMX-8- 0857	PLUG		1	M8 X 1.25	
30	GMX-8- 1080	BOLT		4	M10X60 HEX FLG HD	



**TZ0211**

**REVERSE IDLER ASSY.**

Item	Current Part	Description	Replaced Part	Qty.	Notes	Kits/Assys Where Needed
1	X8881424	CIRCLIP		1		
2	8883246	REVERSE IDLER SHAFT		1		
3	8870343	THRUST WASHER		2		
4	8880489	REVERSE IDLER GEAR		1		
5	X8872478	NEEDLE ROLLER BRG		2		
6	8872479	SPACER		1		



TZ0213

**SELECTOR ASSY.**

Item	Current Part	Description	Replaced Part	Qty.	Notes	Kits/Assys Where Needed
0	T21275	SELECTOR ASSY. 9SP O/D PPA		1		
0	U8883657	SELECTOR ASSY 9SP O/D PPA		1		T21275
1	8872328	SELECTOR KEY		1		
2	8882443	SELECTOR SHAFT		1		
3	8880759	INTERLOCK KEY		1		
4	8875499	FORK CRAWLER/REVERSE		1		
5	8880760	FORK 1ST/2ND		1		
6	8874755	SELECTOR BLOCK		1		
7	X8870277	DOWEL		1	Ø10.0055 X 34.6	
8	8873691	SCREW		1	M10X23 HEX HD	
9	8877613	SELECTOR OVERDRIVE		1		
10	8876856	FORK OVERDRIVE		1		
11	8882321	OVERDRIVE SHIFT PAD		2		
12	U8875939	SELECTOR BLOCK		1	INCLUDED 8874755 & X8870277	



Copyright Eaton Corporation, 2009.  
Eaton hereby grants their customers,  
vendors, or distributors permission to  
freely copy, reproduce and/or distribute  
this document in printed format. It may  
be copied only in its entirety without  
any changes or modifications. THIS  
INFORMATION IS NOT INTENDED FOR  
SALE OR RESALE, AND THIS NOTICE  
MUST REMAIN ON ALL COPIES.

